

## WEATHER EQUIPMENT

<b>Assemblies included In this group: -</b>	<b>9.1</b>		PRESS STUD FITTING PROCEDURE
	<b>9.2</b>	K3601163AB	BOOT COVER
	<b>9.3</b>	K3601165AA	TONNEAU COVER
	<b>9.4</b>	K3601167AA	HOOD ASSEMBLY
	<b>9.5</b>	K3601168AA	SIDE SCREEN ASSEMBLY
	<b>9.6</b>	K3601169AA	WIND DEFLECTOR ASSEMBLY

### Tools required for assembly of this group: -

3mm Allen key	Pop Rivet gun	Upholstery pins
8mm Spanner	Measuring tape	
8mm Socket	Pencil	
Torque wrench	Upholstery punch	



The following procedures should be performed by a professional upholstery fitter.

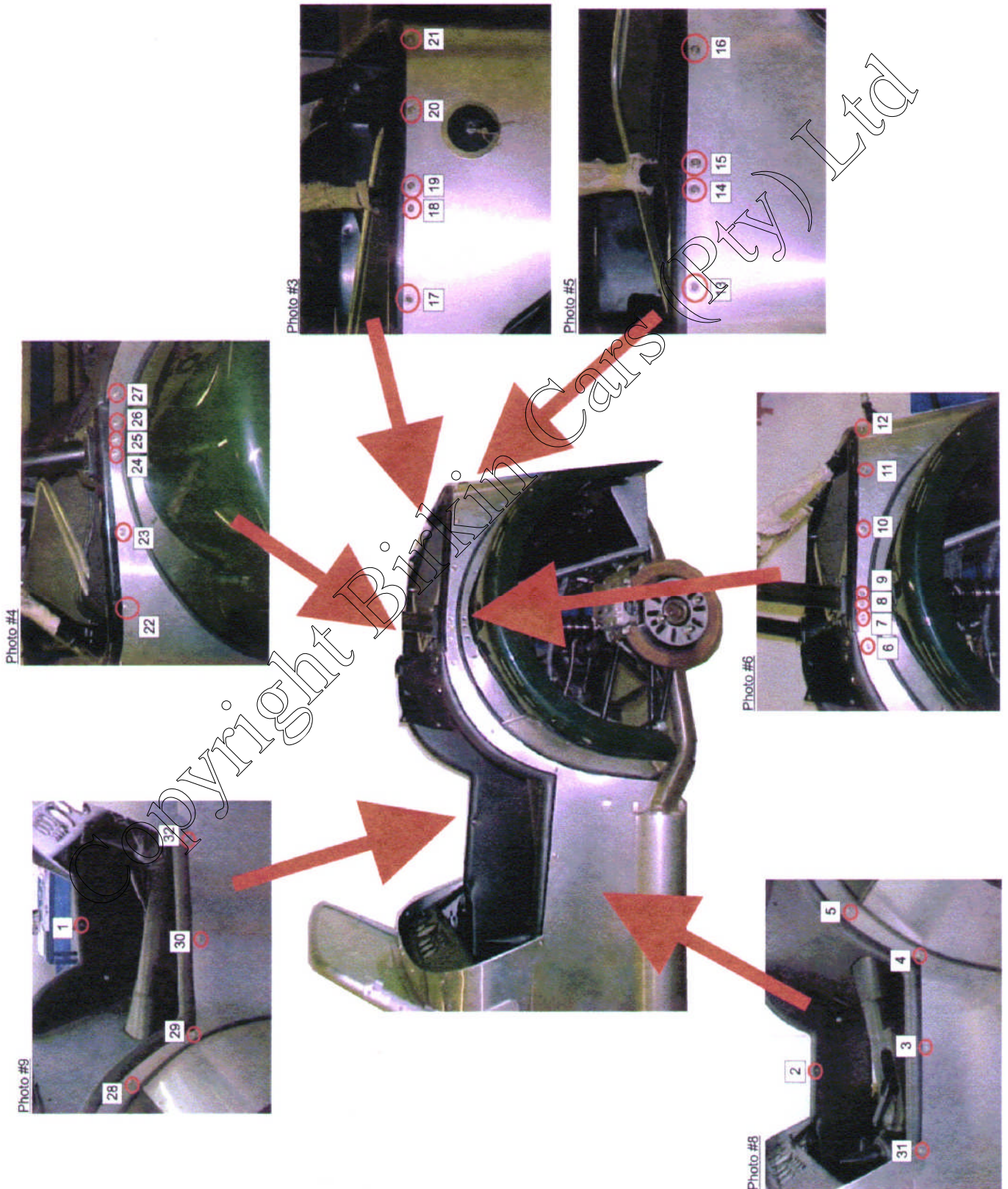


# GROUP NINE

1st Edition

## 9:1 PRESS STUD FITTING PROCEDURE

Procedure for fitting press studs to chassis, for the boot cover, tonneau cover, soft top hood and side screens.



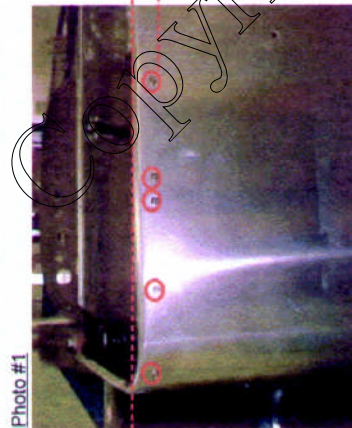


Photo #1

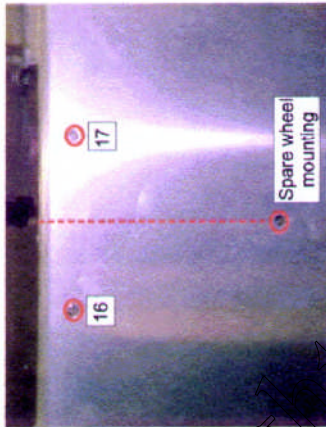


Photo #2

**Position for studs #1 through to #32**

Studs numbered from #10 through to #23 are fitted to the chassis before the boot liner is fitted to the vehicle. These studs are positioned 26mm from the top of the chassis.

Photo #1

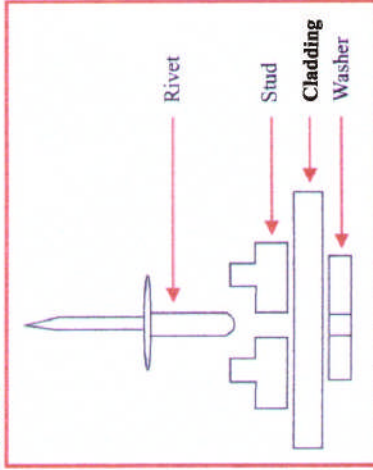
Using the spare wheel mounting (Photo #2) has a guide, draw a vertical line from the centre of the mounting to the top of the chassis. This will be the mid point between studs #16 and #17.

- Distance between mid point and stud #17 = 70mm Photo #2
- Distance between stud #17 and #18 = 130mm Photo #3
- Distance between stud #18 and #19 = 35mm Photo #3
- Distance between stud #19 and #20 = 110mm Photo #3
- Distance between stud #20 and #21 = 110mm Photo #3
- Distance between stud #21 and #22 = 110mm Photo #4
- Distance between stud #22 and #23 = 120mm Photo #4
- Distance between stud #23 and #24 = 130mm Photo #4
- Distance between mid point and stud #16 = 70mm Photo #2
- Distance between stud #16 and #15 = 130mm Photo #5
- Distance between stud #15 and #14 = 35mm Photo #5
- Distance between stud #14 and #13 = 110mm Photo #5
- Distance between stud #13 and #12 = 110mm Photo #6
- Distance between stud #12 and #11 = 110mm Photo #6
- Distance between stud #11 and #10 = 120mm Photo #6
- Distance between stud #10 and #9 = 130mm Photo #6

All the studs from #10 through to #23 should be fitted with 3.2x12 mm rivets and 3mm rivet washers as illustrated - Picture #7

Once these studs have been fitted to the vehicle, the boot liner and roll cage should be fitted.

Picture #7



Studs #7, 8, 9, 24, 25 and 26 are located mid way between the boot liner and the mudguard welting (black rubber fitted between chassis and mudguard.)

Photo #6 and #4

- Distance between stud #9 and #8 = 25mm Photo #6 & Photo #4
- Distance between stud #8 and #7 = 30mm Photo #6 & Photo #4
- Distance between stud #7 and #6 = 50mm Photo #6 & Photo #4
- Distance between stud #24 and #25 = 25mm Photo #6 & Photo #4
- Distance between stud #25 and #26 = 30mm Photo #6 & Photo #4
- Distance between stud #26 and #27 = 50mm Photo #6 & Photo #4

Studs #6 and #27 are located mid way between the upholstered side panel and mudguard welting. Photo #6 and Photo #4

Studs #5 and #28 are located mid way between the upholstered side panel and mudguard welting and in line with the pinch welt around the stoneguard. Photo #8 and Photo #9

Studs #4 and #29 are located mid way between the upholstered side panel and mudguard welting. The centre point of the stud should be in line with the bottom edge of the side panel. Photo #8 and Photo #9

Stud #3 is 285mm from the bottom of the chassis and 215mm away from stud #4. Fit stud #30 using these measurements. Photo #8 and Photo #9

Stud #31 is 320mm from the bottom of the chassis and 210mm away from stud #3. Use these measurements to fit stud #32. Photo #8 and Photo #9

Studs #1 and #2 are fitted 310mm from the bottom of the chassis inside the cockpit. If the interior has been carpeted then fit stud 300mm from the bottom of the inside of the cockpit. Photo #8 and Photo #9

## 9:2 BOOT COVER - K3601163AB

Components in this assembly		Qty	Part Number
i	Boot cover	1	M3351005AB
ii	Rivet As321 2	20	B5358095AA
iii	Press stud (top)	20	B5358123AA
iv	Press stud (stud)	20	B5451 600AA
v	Press stud (socket)	20	B5451601AA



Press Stud #7 (Photo #6) through to Press Stud #25 (Photo #4) are used for the attachment of the boot cover.

### Boot cover fitting procedure

1. Lay the boot cover in place on the vehicle with the top of the collar (illustrated below with a red line) corresponding to the top edge of the boot liner.

2. Using upholstery pins, pin the boot cover to the press studs on the chassis.

3. Using photos #3, #4, #5 and #6 as a guide, pin the boot cover, always alternating between press studs on either side of the mid point. Between press stud #17 and #16. While pinning the boot cover, always pull on the collar to remove any creases.



4. While the boot cover is pinned, mark and cut the boot cover flap located in the cockpit to allow clearance for the seat belt as illustrated below.



Do Not cut the zip on the boot cover.



**Boot cover fitting procedure continued**

5. Using a pencil, mark the location of the pin on the boot cover collar.



6. Remove all the pins from the boot cover. Using an upholstery punch, make holes on the pencil markings made in point #5.



7. Fit the top press stud through the punched holes in the boot cover collar.

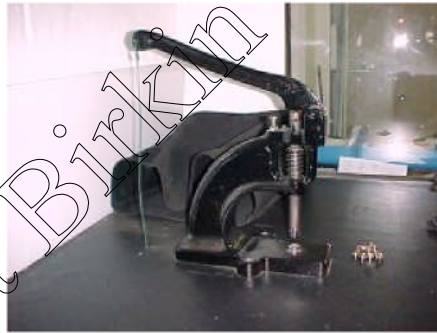


8. With the top press stud in position remove the boot cover from the vehicle. Using a press stud fitting tool to fit the socket press stud to the boot cover. The socket press is located on the under side of the top press stud.

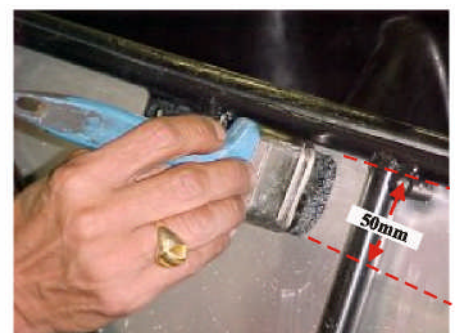


**Read instructions to operate press stud fitting tool.**

9. Apply a good adhesive to the underside of the boot cover flap.

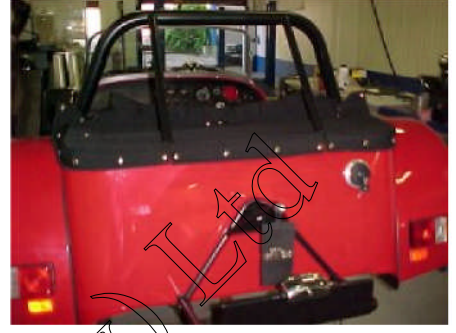


10. Apply the adhesive to the chassis (black round tube) and onto the aluminium panel approximately 50mm below the chassis tube.

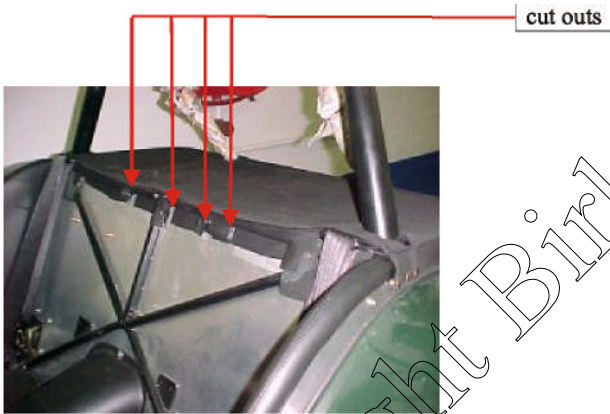


### Boot cover fitting procedure continued

11. Follow instruction for the application of the adhesive. Once the adhesive is ready, fit the boot cover to the chassis matching the press studs on the boot cover to those on the chassis.




12. Stick the boot cover flap to the chassis. Cut the flap at various points as illustrated below at so the maximum surface area of the flap is glued to the aluminium panel.



## 9:3 TONNEAU COVER - K3601165AA

Components in this assembly		Qty	Part Number
i	Screw M3.5x20 s/tap	2	B5358040AA
ii	Press stud (top)	16	B5358123AA
iii	Press stud (stud)	14	B5451600AA
iv	Press stud (socket)	16	B5451601AA
v	Tonneau cover	1	M3351053AA

 Seat backing board should be fitted prior to fitting of tonneau cover.

**NB** Press stud #7 (photo #6); #5; #4; #3; #31 (photo #8); #26 (photo #4); #28; #29; #30 and #32 (photo #9) and all the press studs on the scuttle are used in the application for fitting of the tonneau cover.

### Tools

1. Zip the tonneau cover to the boot cover.
2. Lay the tonneau cover over the scuttle and above the mudguard as illustrated below.



3. Release the boot cover from press stud #7 (photo #6) and press stud #26 (photo #4). Using upholstery pins, pin the tonneau cover to both press stud #7 and press stud #26.



## Tonneau cover fitting procedure continued

4. Stretch the tonneau cover over the scuttle with the centre zip positioned between the two press studs on the scuttle. With the tonneau cover still stretched, pin it to the two press studs as illustrated below.



5. Continue to pin the tonneau cover to the remaining press studs on the scuttle and chassis.

6. Mark the locations of the pins on the tonneau cover using a pencil.



Remember to remove all creases while pinning.



7. Remove all the pins. Using an upholstery punch, punch holes into the tonneau cover on the pencil markings and fit the top press stud to the tonneau cover.





**Tools:**

**8.** Using the appropriate tooling, fit the socket press stud to the tonneau cover.

**9.** Refit the tonneau cover to check fit.



Copyright Birkin Cars (Pty) Ltd

## 9:4 HOOD ASSEMBLY - K3601167AA

Components in this assembly		Qty	Part Number
i	Soft top assembly	1	M3351011AA
ii	Press stud (top)	22	B5358123AA
iii	Press stud (socket)	22	B5451601AA
iv	Hoop - complete	1	M3101066AA

~~~~~



\*Windscreen should be fitted to the chassis.

\*Roll bar should also be fitted.

\*All press studs on the windscreen are for the application for the soft top hood.

\*Press studs #6, #9 through to #24 and #27 (photo #4 and photo #6) are also used for the application for the soft top hood.

~~1. Fold the hood in half to obtain a centre point on the front collar.~~

1. Fold the hood in half to obtain a centre point on the front collar.

2. Mark the position with a pencil on the collar. 3. Use an upholstery punch and punch a hole on the pencil marking.

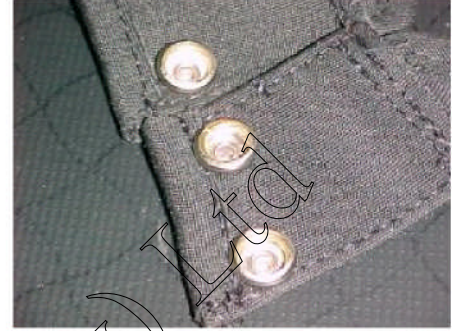


4. Fit a press stud and the socket press stud to the hood and fit to windscreen. 5. Mark the position of the remaining studs on the windscreen onto the hood front collar. Keeping the top stitch of the hood aligned with the top of the windscreen frame and removing creases.



**Hood assembly fitting procedure continued** \_\_\_\_\_

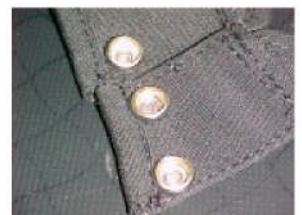
6. Once all press stud positions are marked, remove the hood and using an upholstery punch, punch holes for the top press stud. Fit top press stud and socket to the hood.



7. Refit hood to windscreen. 8. Stretch the hood over the roll bar and pin the rear collar to the press studs on the chassis. The top stitch on the collar should be on the edge of the boot liner. Remove creases while pinning.

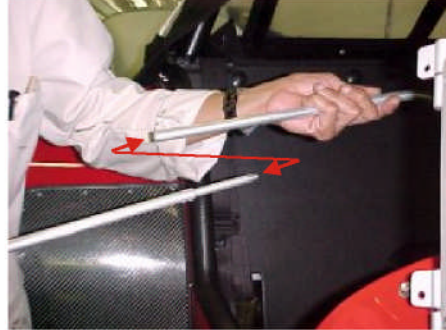


9. With all press studs pinned with upholstery pins, mark positions on the hood using a pencil. Remove the hood and with an upholstery punch, punch holes on the pencil markings for fitting the top and socket press stud.

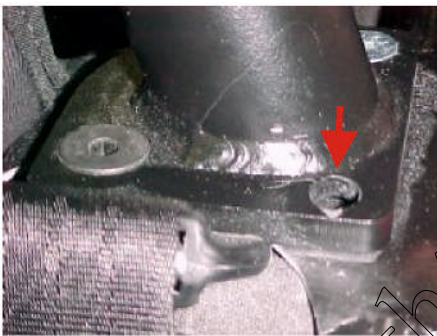


**Hood assembly fitting procedure continued**

- 10.** Refit the hood and match all relating press studs on the rear of the for a 'U' shape. chassis only.
- 11.** Assemble the hoop as illustrated



- 12.** Fit the hoop onto the roll bar mounting plate as illustrated below.



- 13.** Pull the front collar over the hoop and fit to the windscreen.

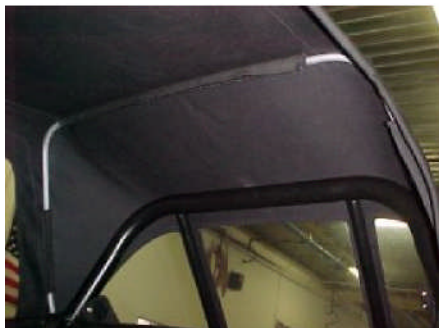
- 14.** Inside the hoop at the location near the hoop there are three velcro straps.



**NB** For illustration purposes, the hood is not stretched over the hoop.

**Hood assembly fitting procedure continued** \_\_\_\_\_

15. The hoop must be pushed firmly onto the velcro straps and fitted to the hood. The hoop should be situated at the stitch as illustrated in red below.



Copyright Birkin Cars (Pty) Ltd

## 9:5 SIDE SCREEN ASSEMBLY - K3601168AA

| Components in this assembly |                         | Qty | Part Number |
|-----------------------------|-------------------------|-----|-------------|
| i                           | Nut M5 Nyloc            | 8   | B5358089AA  |
| ii                          | Washer 5mm x 10 flat    | 16  | B5358094AA  |
| iii                         | Rivet AS 3212           | 2   | B5358095AA  |
| iv                          | Press stud (top)        | 8   | B5358123AA  |
| v                           | Capscrew M5 x 16        | 8   | B5358221AA  |
| vi                          | Side window             | 2   | B5451556AA  |
| vii                         | Locking strip (Clayton) | 4   | B5451568AA  |
| viii                        | Press stud (stud)       | 2   | B5451 600AA |
| ix                          | Press stud (socket)     | 8   | B5451601AA  |
| x                           | Hinge top section       | 4   | M3101067AA  |
| xi                          | Side screen R/H         | 1   | M3351014AA  |
| xii                         | Side screen L/H         | 1   | M3351015AA  |



\*Press stud #29; #32; #1 (photo #9); press stud #31; #4 and #2 (photo #8) are used for the application for fitting the side screens.

\*This procedure requires the hood to be fitted.

### Steps

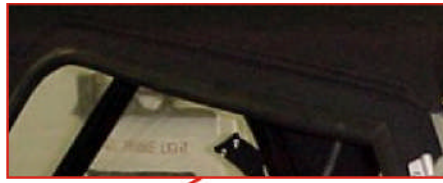
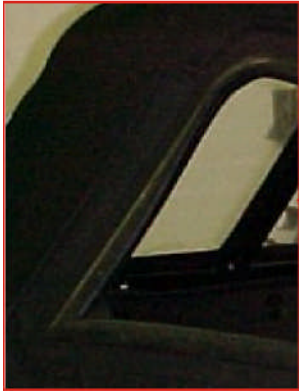
1. Fit the top section hinge to the bottom section hinge mounted onto the windscreen bracket as illustrated below.

2. Position the sidescreen onto the vehicle as illustrated.



**Side screen fitting procedure continue**

Notice the top of the side screen is fitted inside the hood and the rear of the side screen fits over the hood.

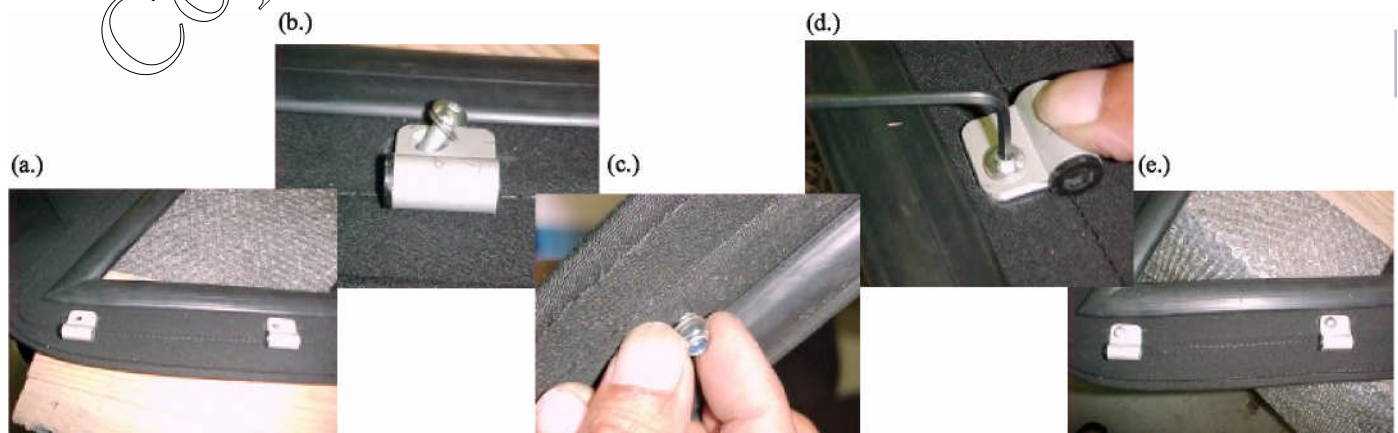


3. Mark the position of the hinges onto the side screen using a pencil.

4. Using a 5mm drill bit, drill mounting holes onto the sidescreen for the hinges.



5. Use a M5 x 16 capscrew, Nyloc nut and two 5mm washers to fit each hinge (as illustrated below from point (a.) through to point (e.)) to the sidescreen.



**Side screen fitting procedure continue**

---

6. Refit sidescreen to the vehicle.

7. Using a pencil mark the positions of the press studs on the chassis onto the side screen.



8. Remove the side screen and fit the top press stud and socket press stud to the side screen.



Copyright Birkin Cars (Pty) Ltd



**Window fitting procedure to the side screen \_\_\_\_\_**

**1.** Spray a silicon based lubricant into the rubber fitted to the side screen.

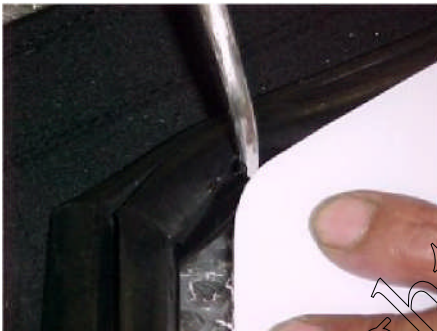
**2.** Remove the protective film from the window.



**Film not removed in illustration!**



**3.** Slide the window into the rubber. **4.** Window must be manipulated into the rubber. **5.** Spray silicone base lubricant onto the rubber to fit locking strips.



**Specialised tools are used for this purpose.**



Copyright Birkin Cars (PTY) Ltd

## 9:6 WIND DEFLECTOR - K3601169AA

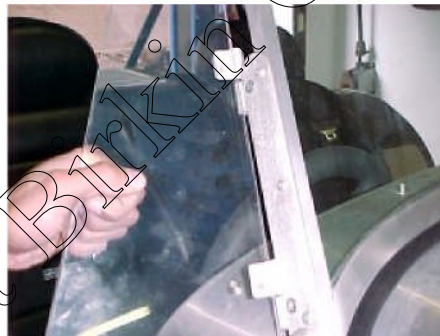
| Components in this assembly |                           | Qty | Part Number |
|-----------------------------|---------------------------|-----|-------------|
| i                           | Wind deflector bag        | 1   | M3351012AA  |
| ii                          | Nut M5 Nyloc              | 4   | B5358089AA  |
| iii                         | Washer 5mmx10 flat        | 8   | B5358094AA  |
| iv                          | Capscrew M5 x 16 domehead | 4   | B5358221AA  |
| v                           | Deflector R/H tint        | 1   | B5451171AA  |
| vi                          | Deflector L/H tint        | 1   | B5451 172AA |
| vii                         | Hinge top section         | 4   | M3101067AA  |

### Warnings

1. Fit hinge top section to the hinge fitted on the windscreen bracket as illustrated below.

2. Offer the wind deflector to the hinges. The deflector should be placed on the outer face of the hinges.

3. Using a capscrew M5x16 domehead, two washers and a M5 nut, secure wind deflector to the hinge.



4. Torque nut to 5Nm.

5. The wind deflector inner profile should be parallel to the windscreen bracket as illustrated by the red line below.



**When NOT in use, store the deflectors in the bag provided!**

